



Traceable® Three-Channel Timer

Developed with busy clinics
and clinical labs in mind

- Always ready on your benchtop with 3 channels available for tracking simultaneous timing events
- Ergonomic design provides optimal viewing angle, easy use, and increased stability on bench
- Antimicrobial protection is built in for a cleaner, more hygienic product
- Large, tactile buttons are glove-friendly
- Repetitive or recurring tasks are quick and easy with on-board memory function that returns display to previously programmed countdown time



coleparmer.com

1.800.323.4340

Traceable is an Antylia Scientific company
Find out more at antylia.com



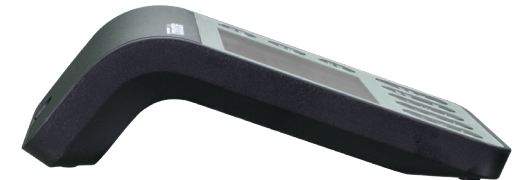


Traceable® Three-Channel Timer

- Maintain compliance; includes NIST-traceable certificate from our A2LA accredited (1750.01) calibration laboratory
- Volume and buzzer timer are adjustable

The triple-display clock/timer can be used as a digital clock, timer, or stopwatch. Timer displays time of day or time remaining in any of the three timer channels. Each channel can be used either simultaneously or independently. Memory recalls previous time set. Display allows simultaneous up and down timing on different channels with unlimited time-outs. Alarm tones are unique for each channel and have adjustable volume. Flashing LCD indicates alarm condition.

In addition, timer features an antimicrobial protection which reduces the presence of odor and stain causing microbes such as bacteria, mold, and fungi on the product surface.



Stable angled design allows easy setting and viewing without having to hold the timer



Channels	Timing capacity	Resolution	Accuracy	Count direction	Display	Battery (included)	Dimensions (L x W x H)	Item number
3	99 hours, 59 minutes, 59 seconds	1 second	±0.001%	Up/down	Three-line LCD, %"H	One AAA	3.25" x 3" x 1" (8.3 x 7.6 x 2.5 cm)	56000-13

Traceable® products have an individually numbered Traceable® Certificate that assures accuracy from our ISO/IEC 17025:2017(1750.01) calibration laboratory accredited by A2LA. It indicates traceability of measurements to the SI units through NIST or other recognized national measurement institutes (NMI) that are signatories to the CIPM Mutual Recognition Agreement. Each product goes through an intense vetting process before it can carry the Traceable name, saving you both time and money by not having to calibrate separately.

coleparmer.com

USA:
1-800-323-4340
1-847-549-7600

Canada: 1-800-363-5900
China: +86-21-5109-9909
France: +33 (0) 1486 37800
Germany: +49 (0) 9377 92030

India: 1-800-266-1244
Italy: +39 (0) 1313 89513
UK: +44 (0) 1480-272279
All other countries: 1-847-549-7600

Traceable is an Antylia Scientific company
Find out more at antylia.com

