



Wi-Fi/Ethernet connected Traceable® Data Loggers with TraceableLIVE® Cloud Service

- Choose Wi-Fi or Ethernet connectivity
- New voice notification escalation*
- Apple Watch® integration
- New and improved user interface

*Requires a Premium subscription



traceable.com

1.800.323.4340

Traceable is an Antylia Scientific company
Find out more at antylia.com



TraceableLIVE® Cloud Service for remote monitoring and ease of mind

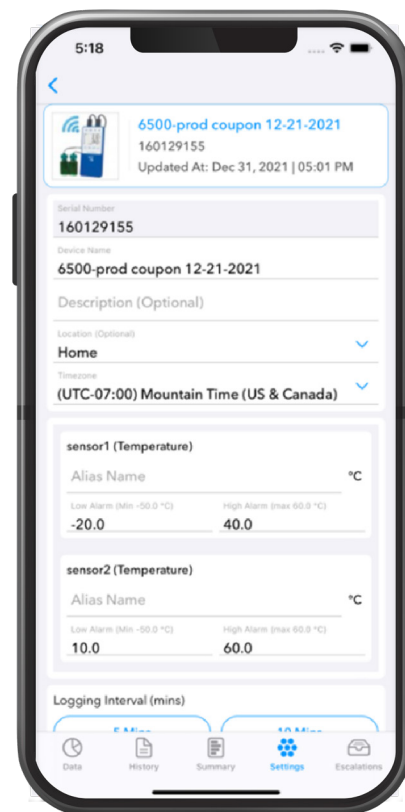
Refrigerator/Freezers • ULT Freezers • Chemical Storerooms • Greenhouses • Cryogenic (LN₂) Storage • Controlled Warehouses

Ideal for labs, research organizations, clinics, healthcare providers and anyone who requires that samples remain within set tolerances for temperature, humidity, barometric pressure, or CO₂. Protect your vaccines, pharmaceuticals, biological materials, or other product from degrading due to improper storage or transport conditions.

TraceableLIVE Cloud Service

- Cloud-based application—no local software required; web, Android™, iOS data visibility
- Receive Apple Watch, Voice call*, mobile push, e-mail, text notifications
- Easy setup with mobile QR code
- Continuous data transmission and monitoring using SSL-encrypted SECURE connection
- Generate data reports in real time, data backup guaranteed
- View conditions and set alarm parameters on device remotely
- Expanded use with 21 CFR Part 11 compliance with premium subscription

*Requires a Premium subscription



Reduce Your Risk

Real-time, remote monitoring—receive email, in app messages, or text alerts



Easy Mobile Setup

Get connected to your devices and start monitoring in less than 2 minutes

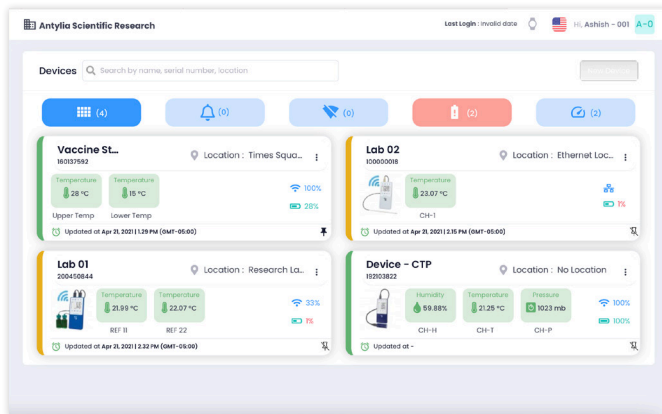


Broad-Range Applications

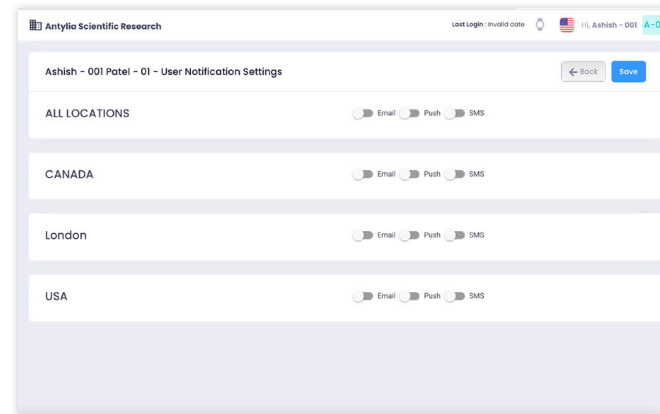
Temperature, humidity, barometric pressure, CO₂



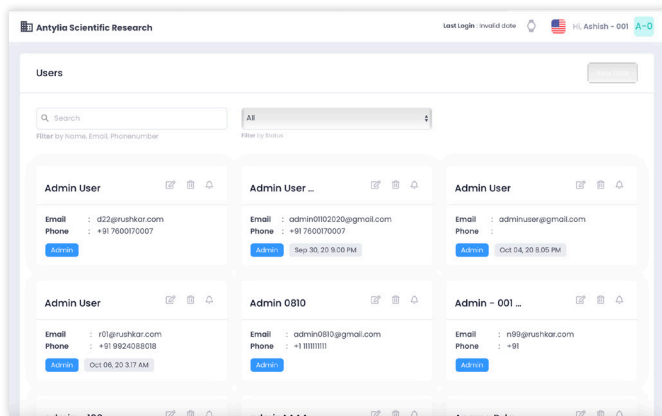
Personalize dashboards to immediately see data that is important to you.



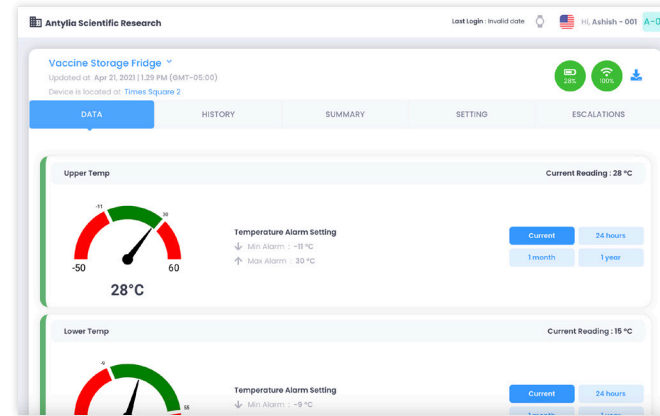
Quickly find devices by name, location, or alarm status.



You can even set notifications to escalate to other team members if alerts are not addressed.



Easily manage user access and device details.



View device data by channel, a specific time, or current time.

At a glance see readings, alarm settings and statuses, Wi-Fi strength, battery level, and more.



The sooner you know the better!

- Voice Notification Escalation now available for TraceableLIVE Premium subscribers
- TraceableLIVE Premium subscribers will now be able to set up an escalation path that generates an automated phone message for out-of-range conditions to mobile and landline phones
- Easy setup—just configure as an Escalation in the Escalations menu
- Ideal for high importance escalations



Get notified wherever you are— it's all on your wrist!

- Accessing your TraceableLIVE devices couldn't be easier
- TraceableLIVE paid subscribers will be able to access their devices and notifications via Apple Watch





Meet compliance requirements with USB for VFC

- All TraceableLIVE users will be able to output secure PDF files as required by California code
- Download CSV files from all Traceable® Excursion-Trac™ devices
- Upload USB data from Excursion-Trac data loggers to the TraceableLIVE cloud



Performance and speed improvements with app update

- App will automatically update on your phone OR you can manually update it if auto-updates are turned off
- All TraceableLIVE users will be able to receive the new updated app
- Update allows TraceableLIVE to better support users with future functionality improvements





Prepaid Subscription Packages

Now you can get TraceableLIVE without monthly charges on your credit card. Simply order a subscription for 1 or 2 years. You can add it to your new TraceableLIVE product purchase or order it alone to add to one of your current TraceableLIVE devices.

FREE

E-mail and push alarms

1 user only

1 month data storage

Up to 3 devices

Standard

\$100

1 Year/Device

\$200

2 Years/Device

E-mail and push alarms

Apple Watch compatibility

Optional SMS text notifications*

Unlimited users, data storage

Unlimited devices

Monthly subscription available
\$8.99/Device on traceablelive.com

Premium

\$165

1 Year/Device

\$330

2 Years/Device

Voice call, e-mail and push alarms

SMS text notifications included

Apple Watch compatibility

Unlimited users, data storage

Unlimited devices

21 CFR Part 11 compliance**

Monthly subscription available
\$14.99/Device on traceablelive.com

Prepaid Subscription Packages

Description	Item number
1 year Standard TraceableLIVE Subscription	6650
2 year Standard TraceableLIVE Subscription	6651
1 year Premium TraceableLIVE Subscription	6652
2 year Premium TraceableLIVE Subscription	6653

Monthly subscription available Standard \$8.99/Device; Premium \$14.99/Device on traceablelive.com

*SMS Text notifications add \$2+/month/device (credit card only).

**Meets 21 CFR Part 11 North American Compliance and Annex 11 for Europe.

Traceable® Wi-Fi Data Loggers compatible with TraceableLIVE® Cloud Service*

Get immediate alerts before you lose valuable samples

- Wi-Fi enabled digital data logger connects easily to network and provides continuous data transmission to the app interface
- Ideal for use in healthcare and vaccine monitoring (VFC compliant**)

What's Included: Probe with 10-ft (3-m) cable or USB dongle that is inserted into device, holder with magnetic back, four AAA alkaline batteries, and NIST-traceable calibration certificate with data.

Parameters	Range	Resolution	Accuracy	Probe	Item number
Temperature	-50.00 to 60.00°C (-58.00 to 140.00°F)	0.01°	±0.25°C	2 glycol-filled temperature buffered bottles probes	6500
				1 bottle & 1 bullet	6501
				2 plastic bullet waterproof probes	6502
				2 stainless steel 316 probes	6503
ULT Temperature	-90.00 to 105.00°C (-130.00 to 221.00°F)	0.01°	±0.1°C	1 platinum RTD sensor, stainless steel 316 probe	6510
				2 platinum RTD sensor, stainless steel 316 probes	6511
LN ₂ Temperature	-200.00 to 105.00°C (-328.00 to 221.00°F)	0.01°	±0.25°C	1 platinum RTD sensor, stainless steel 316 probe	6512
				2 platinum RTD sensor, stainless steel 316 probes	6513
High Temperature	0.00 to 300.00°C (32.00 to 572.00°F)	0.01°	±0.25°C	1 platinum RTD sensor, stainless steel 316 probe	6514
				2 platinum RTD sensor, stainless steel 316 probes	6515
Temperature	0.00 to 55.00°C (32.00 to 131.00°F)	0.01°	±0.4°C	1 ambient dongle sensor	6520
Humidity	0.0 to 100%RH (noncondensing)	1%	±3% (20 to 80% RH), ±5% otherwise	1 external probe sensor on 3' cable	6521
CO ₂	0 to 10,000 ppm	1 ppm	4% reading + 100 ppm	1 ambient dongle sensor	6525
Temperature	0.00 to 50.00°C (32.00 to 122.00°F)	0.01°	± 0.4°C		
Humidity	0 to 95% (noncondensing)	0.01% RH	±3% (5 to 75% RH), ±5% otherwise		
CO ₂	0.00 to 20.00%	0.01%	4% reading + 1% full scale	1 external probe sensor on 3' cable	6526
Temperature	0.00 to 50.00°C (32.00 to 122.00°F)	0.01°	± 0.4°C		
Humidity	0 to 95% (noncondensing)	0.01% RH	±3% (5 to 75% RH), ±5% otherwise		
Barometric Pressure	500 to 1100 millibars (mb)	1 mbar	±4 mbar	1 ambient dongle sensor	6529
Temperature	0 to 55°C (32 to 131°F)	0.01°	±0.4°C		
Humidity	0 to 100% RH (noncondensing)	0.01% RH	±3% (5 to 75% RH), ±5% otherwise		

*A TraceableLIVE account is required for TraceableLIVE services.

**Temperature-buffered bottle probes meet requirements for VFC (Vaccine for Children Program).



Traceable® Refrigerator/Freezer
Data Logger Thermometer

6500



Traceable® RH/Temperature
Data Logger with Ambient sensor

6520



Traceable® CO₂/RH/Temperature
Data Logger with external probe

6526

Traceable® Ethernet Data Logging Thermometers compatible with TraceableLIVE® Cloud Service*

Always on, always connected

- Thermometer recalibration is accomplished by simply replacing the probe
- View current temperature conditions anywhere—cloud-based interface sends email, text, and push notifications
- Connect to your data via smartphone, tablet, or PC using TraceableLIVE cloud service*

These data logging thermometers with Ethernet offer an easy and secure way to connect your smartphone, tablet or personal computer remotely with your water baths, refrigerators, freezers and biological/pharmaceutical lab equipment.

Once setup is complete, you can securely monitor parameters 24/7, control your alarms remotely, view your data logging history, run reports in real time and give access to other team members. Each thermometer includes a replaceable, calibrated probe. Thermometer 99469-01 includes a bottle probe filled with nontoxic glycol protecting it from rapid temperature changes when the refrigerator or freezer door is opened. Thermometer 18004-37 comes with a stainless steel probe that measures a wide range of temperatures.

What's Included: Probe with 10-ft (3-m) cable, holder with magnetic back, Ethernet cable, universal power adapter and plug with 5-ft (1.5-m) cord, three AAA alkaline batteries, and NIST-traceable calibration certificate.

Description	Range	Accuracy	Item number
Ethernet Data Logging Thermometer with Bottle Probe	-50.00 to 60.00°C (-58.00 to 140.00°F)	±0.25°C	6600
Replacement Bottle Probe (calibrated) (for 6600 only)			6602
Ethernet Data Logging Thermometer with Stainless Steel Probe	-90.00 to 105.00°C (-130.00 to 221.00°F)		6601
Replacement Stainless Steel Probe (calibrated) (for 6601 only)			6603

*A TraceableLIVE account is required for TraceableLIVE Cloud service.

traceable.com

USA:
1-800-323-4340
1-847-549-7600
4741.1

Canada: 1-800-363-5900
China: +86-21-5109-9909
France: +33 (0) 1486 37800
Germany: +49 (0) 9377 92030

India: 1-800-266-1244
Italy: +39 (0) 1313 89513
UK: +44 (0) 1480-272279
All other countries: 1-847-549-7600

Traceable is an Antylia Scientific company
Find out more at antylia.com



Traceable® Ethernet
Data Logging Refrigerator/Freezer
Thermometer
6600



Top view

