

OPERATION MANUAL

LCD Display/Indicator



: Low Battery Indicator

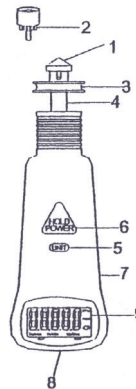
RPM: Rotations per minute

M/Min: Meter per minute

Ft/Min: Feet per minute

Yd/Min: Yard per minute

HOLD: Reading hold



FRONT PANEL DESCRIPTION

1. Cone (convex) Adapter
2. Funnel (Concave) Adapter
3. Wheel for linear surface
4. Contact Adapter
5. Unit select key
6. Power on/off & Hold key
7. Battery Cover (rear)
8. Power on/off
9. Front Panel & LCD display

SPECIFICATIONS

Display	LCD display
Time base	4.0Mhz Quartz Crystal
Sampling Time	1 sec (>60rpm) >1 sec. (10-60rpm)
Accuracy	0.04% ±2 digits
Operating Temperature	32 to 122°F (0 to 50°C)
Operating Humidity	Max. 80%RH.
Power Supply	9V battery
Power Current	Approx. 12mA DC
Power Consumption	2uA (Idle) 11mA (Measurement)

Test Range	Resolution
10,000 ~ 99999 RPM	0.001/0.01/0.1/1
1.000 ~ 9999.9 M/Min	0.0001/0.001/0.01/0.1
3.0000 ~ 30000 Ft/Min	0.0001/0.001/0.01/0.1
1.0000 ~ 10000 Yd/Min	0.0001/0.001/0.01/0.1

METER PER SECOND (M/SEC)

= Ft./Min x 0.00508

= M/Min / 60

= Yd/Min x 0.01524

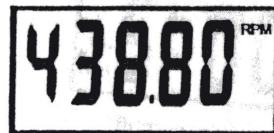
MEASURE OPERATION

A. Power ON/OFF

Power on the Tachometer by pressing the Triangle button (**POWER, HOLD**) key is pressed. Full display appears in half second, then turn to a normal mode. Power off the meter by pressing and hold (**POWER, HOLD**) key for 3 seconds.

The meter powers **OFF** automatically after non-operation in 20 minutes.

The meter has a unique design with two power keys, one at the middle of top view, another key is smaller at the bottom of the meter for easy power on or off when measuring an object at a downview location. (See point 8 from Front panel description).



B. Data HOLD

This meter automatically holds the last reading on the LCD after the POWER/HOLD key is released. No extra key presses are necessary to freeze the displayed reading.



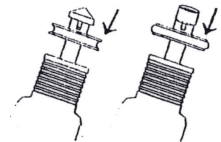
DISABLE SLEEP MODE

To disable Sleep mode, make sure the meter is off. Press and hold the UNIT key and the POWER, HOLD key simultaneously, then release POWER, HOLD key. First, you will see an "n" display at the middle of the screen. This means the sleep mode has been disabled. When you release the UNIT key, 00000 and RPM are shown for ready to the next measurement.



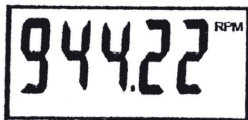
CONTACT MEASUREMENTS:

Select the tip (Convex or Concave), and install it on the shaft of the adapter. See Diagram. Engage the tip with the end of the rotate. Contact RPM - Used to measure the speed of rotating Conveyers, Pumps, Motors, Gears, Pulleys, Shafts, Flywheels and Elevators...



Install Convex adaptor or Concave tip on the shaft of the adaptor.

The Tachometer for measuring speeds of rotating objects in RPM, M/Min, Ft/Min, Td/Min for different purposes. Press UNIT key once from preset RPM (right corner indicator) to left bottom corner M/Min, press UNIT key again, Ft/Min appears in the middle.



Press the UNIT key once more, Yd/Min appears at the right corner, press again to RPM unit. See the following diagram from RPM unit to Yd/Min:

CAUTION

Injury or damage may occur if the specified ranges of the linear or contact adaptor are exceeded!

MAINTENANCE

Case Cleaning

Use caution with a damp cloth to clean the exterior housing, ensure no water or soap is allowed inside the meter, or on the lens.

BATTERY REPLACEMENT

A battery icon appears is the indication that the battery voltage has fallen into the critical region (6.5 to 7.5V).

Open the Battery Compartment and remove the battery, then install a new battery and replace the cover.

WARRANTY, SERVICE, OR RECALIBRATION

For warranty, service, or recalibration, contact:

TRACEABLE® PRODUCTS

12554 Old Galveston Rd. Suite B230

Webster, Texas 77598 USA

Ph. 281 482-1714 • Fax 281 482-9448

E-mail support@traceable.com • www.traceable.com

Traceable® Products is ISO 9001:2018 Quality-Certified by DNV and ISO/IEC 17025:2017 accredited as a Calibration Laboratory by A2LA.

TRACEABLE® TOUCH TACHOMETER INSTRUCTIONS

Traceable® is a registered trademark of Cole-Parmer.

©2020 Traceable® Products. 92-4261-00 Rev. 4 051520