

# Traceable® Logger-Trac™ Temperature Datalogger

**Logger-Trac™ ultimate monitoring partner— displays, records, and reports data every step of the way**



**Know the Temperature Excursion Duration immediately, no data download required**

- Traceable® Logger-Trac™ Temperature is perfect for monitoring material during storage, handling, transportation
- Active LCD allows cumulative duration of temperature excursion from user-selected MIN/MAX values to be viewed immediately and downloaded if needed

**Active LCD shows the following important data:**

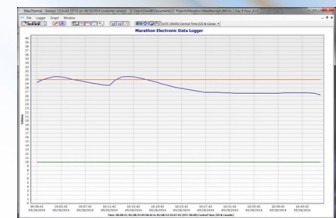
- Current, MIN/MAX temperatures
- Recording status
- Run Time
- Alarm (Excursion) Cumulative Time
- Quarantine status
- Alarm Tally

## Alarm Tally

LCD shows the running alarm tally based on the acceptable temperature range and recording interval. Alarm tally is incremented when reading goes outside acceptable parameters during recording interval.

## QUARANTINE

Once an alarm condition has occurred, Alarm Tally, "ALARM" notification appears, cumulative alarm time. If too many Alarm events occur within pre-set parameters, "QUARANTINE" will appear on the display.



**MaxiThermal Software—ideal solution for managing and analyzing data**

## Product Specifications

- ▶ **Temperature Range:** -35.0 to 50.0°C (-31.0 to 122.0°F)
- ▶ **Resolution:** 0.1°
- ▶ **Accuracy:** ±0.2°C from 0 to 10°C; ±1°C otherwise
- ▶ **Storage Capacity:** 7,680 readings
- ▶ **Size:** 2.56 x 1.34 x 0.35"
- ▶ **Weight:** 0.65 ounces
- ▶ **Supplied:** batteries, Traceable® Certificate

## Traceable to NIST for accuracy

An individually-numbered Traceable® Certificate is provided which assures accuracy from an ISO/IEC 17025:2015 (1750.01) calibration laboratory accredited by A2LA. It indicates traceability to standards provided by NIST (National Institute of Standards and Technology).

- Cat. No. 6540 Traceable® Logger-Trac™ Temperature Datalogger
- Cat. No. 6580 MaxiThermal Software
- Cat. No. 6570 Logger-Trac™ Cradle/Cable
- Cat. No. 6545 Logger-Trac™ Paper sleeves (100/pk)

**TRACEABLE®  
PRODUCTS**