

Go to [traceablelive.com](https://traceablelive.com) to create a new account.

1

TraceableLIVE®

Email

Password

Forgot Password?

Sign In Create Account

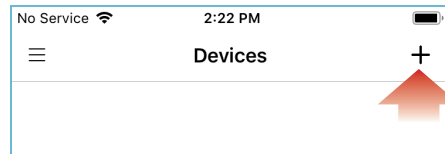
Register Account

**THEN** Download TraceableLIVE mobile app via Apple App Store or Google Play.

Add Device to Account

2

Open TraceableLIVE app on mobile or desktop and Log in to account:



Tap the **+** icon to add a device.

- Permission must be given to TraceableLIVE app to access your mobile device's camera.
- Using your mobile device's camera hover over QR code on back of unit (see right).
- App will automatically fill in device information.



9210382

**Note:** QR code only works with a mobile device.

WiFi Setup

3



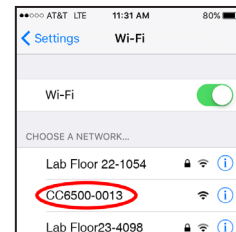
Press/HOLD WiFi button "AP" will appear on display.

Press WiFi button again, "AP URIF" will appear on display.

When "AP rERdy" appears, proceed to next step.

Use Internet enabled device to connect to WIFI

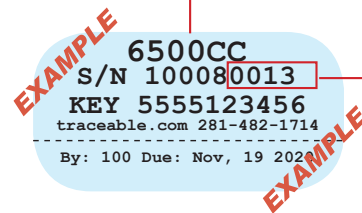
4



Select Network:  
**CC6500-0013**  
see example network

Example

Network: **CC6500-0013**



Open Browser, type  
192.168.1.1 in address bar

5

**CONGRATULATIONS!**  
Your device will restart.

Select local network and enter password.

Security type WPA2 recommended or  
contact your network admin.

Sprint LTE 10:19 AM 60%

192.168.1.1

TraceableLive

**Wi-Fi Network Setup**

Add Profiles:

Network Name:  ▼

Security Type:  Open  WEP  WPA1  WPA2

Network Password:   
Max length: 32

**Add**

The device will reboot after profile is added successfully

**Still having trouble?**  
Please give us a call  
281-482-1714 or email  
[support@traceable.com](mailto:support@traceable.com)

**TraceableLIVE®**  
**QUICK START**  
**GUIDE**