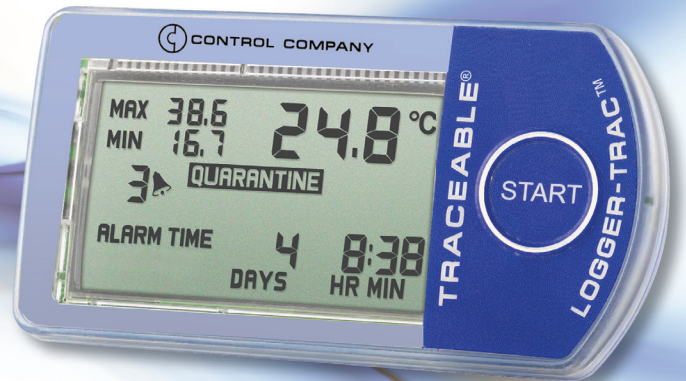


Traceable® Logger-Trac™ Temperature Datalogger

Logger-Trac™ ultimate monitoring partner— displays, records, and reports data every step of the way



Know the Temperature Excursion Duration immediately, no data download required

- Traceable® Logger-Trac™ Temperature is perfect for monitoring material during storage, handling, transportation
- Active LCD allows cumulative duration of temperature excursion from user-selected MIN/MAX values to be viewed immediately and downloaded if needed

Active LCD shows the following important data:

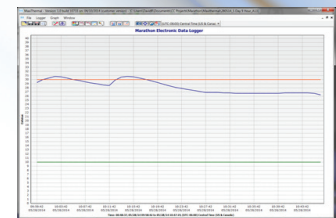
- Current, MIN/MAX temperatures
- Recording status
- Run Time
- Alarm (Excursion) Cumulative Time
- Quarantine status
- Alarm Tally

Alarm Tally

LCD shows the running alarm tally based on the acceptable temperature range and recording interval. Alarm tally is incremented when reading goes outside acceptable parameters during recording interval.

QUARANTINE

Once an alarm condition has occurred, Alarm Tally, "ALARM" notification appears, cumulative alarm time. If too many Alarm events occur within pre-set parameters, "QUARANTINE" will appear on the display.



MaxiThermal Software—ideal solution for managing and analyzing data

Product Specifications

- ▶ **Temperature Range:** -35.0 to 50.0°C (-31.0 to 122.0°F)
- ▶ **Resolution:** 0.1°
- ▶ **Accuracy:** ±0.2°C from 0 to 10°C; ±1°C otherwise
- ▶ **Storage Capacity:** 7,680 readings
- ▶ **Size:** 2.56 x 1.34 x 0.35"
- ▶ **Weight:** 0.65 ounces
- ▶ **Supplied:** batteries, Traceable® Certificate

Traceable to NIST for accuracy

An individually-numbered Traceable® Certificate is provided which assures accuracy from an ISO/IEC 17025:2005 (1750.01) calibration laboratory accredited by A2LA. It indicates traceability to standards provided by NIST (National Institute of Standards and Technology).

- Cat. No. 6540 Traceable® Logger-Trac™ Temperature Datalogger
- Cat. No. 6580 MaxiThermal Software
- Cat. No. 6570 Logger-Trac™ Cradle/Cable
- Cat. No. 6545 Logger-Trac™ Paper sleeves (100/pk)



Additional Logger-Trac™ Products

Traceable® Logger-Trac™ RH/Temperature Datalogger

Mobile unit travels with shipments to track the Relative Humidity and Temperature

- Displays Cumulative Alarm duration from user selected MIN/MAX humidity and temperature values
- Reusable/Re-programmable
- Perfect for monitoring material during transportation
- User selectable humidity/temperature parameters (high and low values) in 1% or 1° increments
- Displayed during recording: Current RH and Temperature, MIN/MAX temperature achieved, cumulative running time
- Storage Capacity: 30,720 readings
- Size: 3.5 x 2.0 x 1.1 inches; weight: 69.5 g

Catalog No.	Range	Resolution	Accuracy
6550	-29 to 72°C (-20 to 161°F)	0.1°	±0.2°C (0 to 10°C); ±0.5°C otherwise
	0 to 100% RH	0.1% RH	±3% RH between (25 to 75% RH); ±5% RH otherwise

Accessories

Catalog No.	Description
6580	MaxiThermal Software
6590	Data capture Cable



Complete flexibility—user-defined recording interval may be set based on the number of desired days to log (from 4 hours to 365 days) or the desired time interval (from every 2 seconds to every 24 hours). To insure that no data is lost, once memory is full the thermometer/hygrometer will stop logging data (data will not be overwritten).

Traceable® Logger-Trac™ LN2 Temperature Datalogger

External sensor designed for -200°C environments in the lab or in transit

- Displays Cumulative Alarm duration from user selected Min/Max temperature values
- Reusable/Re-programmable
- Perfect for monitoring cryo-material in transit as well as reagents, clinical samples, frozen samples, pharmaceuticals and food items in any location
- Storage Capacity: 64,000 readings
- External Probe: stainless steel (PTFE cable): 4.35-inch length x 0.14-inch diameter
- Size: 3.5 x 2.0 x 1.1 inches; weight: 72.8 g (2.6 ounces)

Catalog No.	Range	Resolution	Accuracy
6560	-29 to 72°C (-20.2 to 161.6°F) (int)	0.1°	±0.2°C (2 to 10°C); ±2°C otherwise (int)
	-200 to 72°C (-328 to 161.6°F) (ext)		±0.2°C (0 to 30°C); ±2°C otherwise (ext)

Accessories

Catalog No.	Description
6580	MaxiThermal Software
6590	Data capture Cable



Features:

- Alarm set points (internal and external sensors individually)
- Recording interval
- Start delay
- Unit description
- Time zone
- Temperature unit of measure
- Stop key enable



4455 Rex Road • Friendswood, Texas 77546
 Email sales@control3.com • www.control3.com
 Telephone 281 482-1714 • Fax 281 482-9448