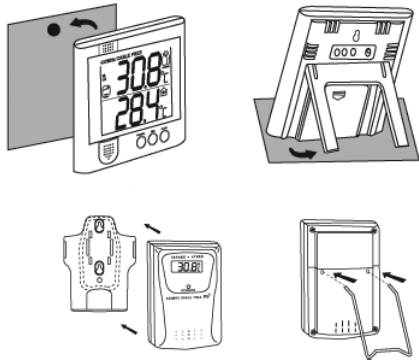


PLACEMENT/MOUNTING OPTIONS



Also included:

Magnet - A magnet is supplied for the remote module. Peel the protective paper off the adhesive tape on the magnet. Press the magnet onto the back of the remote and mount on any metal surface.

Hook & Loop - Self adhesive hook and loop mounting tape is supplied with the remote. Peel off the protective backing. Adhere one piece to the remote and the other to any clean, flat surface.

TRANSMISSION COLLISION/INTERFERENCE

Signals from other radio devices may interfere with those of this product and cause temporary reception failure. This is normal and does not affect the general performance of the product. The transmission and reception of temperature readings will resume once the interference recedes.

All radio signals are inherently affected by interference or blockage. Performance is best when there is little or no interference or blockage. Some of the causes of interference and blockage are metal, reflective surfaces, motors, elevators, fluorescent lights with electric ballasts, sparking environments, emergency radios, power lines, portable/mobile radio transmitters and walkie-talkies. On occasion, momentary interference with the remote transmitter may cause an erroneous minimum or maximum readings to be captured by the receiver.

If two or more remotes in the same area are set to the same channel then any or all receivers will probably receive scrambled signals and report erroneous readings.

TROUBLESHOOTING

If the receiver is not obtaining a signal from the remote(s), or if without obvious reasons, the display for a particular channel goes blank, press the CHANNEL and MEM button simultaneously to force an immediate remote signal search.

The remote transmitter sends a signal to the main receiver every thirty seconds. Wait at least two minutes to see if a signal has been received before continuing with the additional troubleshooting steps.

If the receiver is not able to receive the remote signal:

1. Check the remote to see that it is still in place.
2. Check the batteries of both the remote and the receiver.
3. Verify that the transmission distance is within range and the path is clear of obstacles and interference (shorten the distance if necessary).
4. Make certain that the channel number displayed on the remote matches the channel number indicated on the receiver.
5. If there are two or more remote transmitters, make certain that they are not set to the same channel.

Additional Steps--

Check to make certain that the unit will pick up a nearby signal:

1. Place the remote and receiver in a vertical position approximately 6 feet away from the each other with no obstructions between the units.
2. Make certain the main receiver is set to display the correct remote channel.
3. On the receiver simultaneously press the CHANNEL and MEM button to force a signal search.

If, after waiting at least 2 minutes, the main receiver displays the temperature from the remote transmitter, the units are functioning properly and will perform within their limitations.

If after performing the above steps, the units do not perform when placed further apart, try the following.

- Place the remote as high as possible.
- Place the remote in a vertical/stand-up position.
- Place the receiver in a vertical/stand-up position.
- Place the remote and the receiver in locations where the radio signal does not need to be sent through metal panels, thick walls, multilevels, etc.
- Try several locations. Sometimes moving either unit several feet or as little as 6 inches will make a significant difference.
- Try several different orientations (turn the remote and/or the receiver to the left and/or right).
- Try setting both the remote and receiver to channel 2.
- Replace the batteries in both units with new alkaline batteries.

On occasion radio-transmitted signals may not work in some environments. If this unit does not work in your environment, call 281 482-1714 for additional assistance.

ACCESSORIES

Control Cat. No. 6425

Additional Traceable® Remote Sensor Module with external bottle probe (identical to the remote module supplied).

Control Cat. No. 4116

Accessory Traceable® Remote Sensor Module with waterproof/immersible probe (non-bottle probe)

Control Cat. No. 4117

Accessory Traceable® Stainless-Steel Probe

Triple-purpose probe for liquids, air/gas, and semisolids. Diameter is 1/8-inch. Overall length is 8½ inches. Cable length is 5 feet.

Control Cat. No. 4118

Replacement Bottle Probe for the remote module.

Control Cat. No. 4618

Accessory 5ml "Vaccine Vial" Bottle Probe for the remote module.

ALL OPERATION DIFFICULTIES

If this meter does not function properly for any reason, replace the batteries with a new, high quality batteries (see the "Battery Replacement" section). Low battery power can occasionally cause a number of "apparent" operational difficulties. Replacing the batteries with new fresh batteries will solve most difficulties.

BATTERY REPLACEMENT

An erratic display, faint display, no display, or a battery symbol appearing on the display are all indicators that the batteries need replacement. See the "Remote - Battery Installation and Channel Selection" and/or the "Receiver - Battery Installation" section.

WARRANTY, SERVICE, OR RECALIBRATION

For warranty, service, or recalibration, contact:

CONTROL COMPANY

4455 Rex Road

Friendswood, Texas 77546 USA

Ph. 281 482-1714 • Fax 281 482-9448

E-mail sales@control3.com • www.control3.com

Control Company is ISO 9001 Quality-Certified by DNV and ISO 17025 accredited as a Calibration Laboratory by A2LA.

TRACEABLE® RADIO SIGNAL REFRIGERATOR THERMOMETER INSTRUCTIONS

Control Company Cat. No. 6424, 6425

Traceable® is a registered trademark of Control Company.

©2013 Control Company. 92-6424-00 Rev. 0 030113